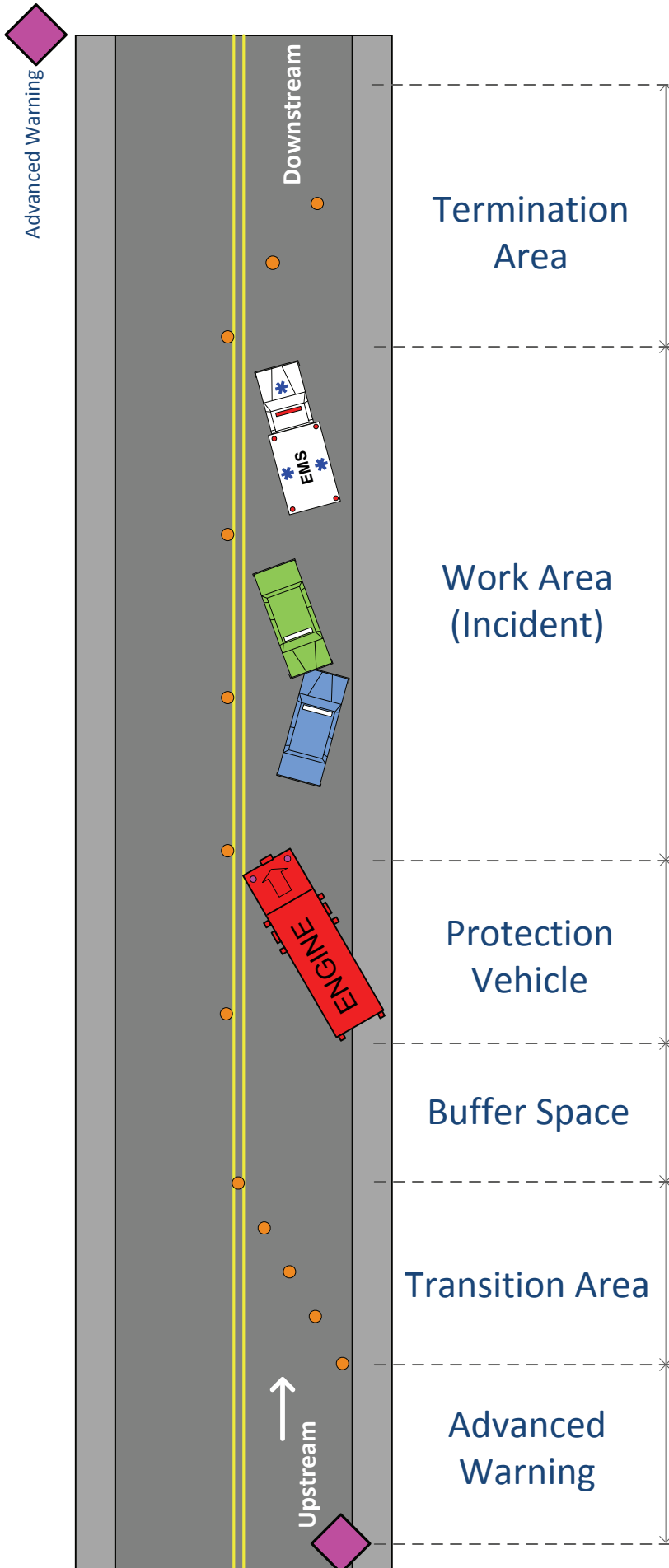


# Temporary Traffic Control For 1<sup>st</sup> Responders



## Estimated Stopping Distances

Speed	Distance (feet)
25 mph	155
35 mph	250
40 mph	305
45 mph	360
50 mph	425
55 mph	495
65 mph	645
70 mph	730

## Advanced Warning

Road Type	Distance
Urban (low speed)	100 feet
Urban (high speed)	350 feet
Rural	500 feet
Highway	1000 feet

## Estimating Distances

Distance between utility poles

Approx. 75 ft to 100 ft

Roadway skip lines

Line = 10 ft

break = 30 ft

Normal pace (step)

Approx. 3 ft

## Example

Distance from Transition to Advanced Warning sign on a rural roadway with a typical speed of 50 mph:

Stopping dist = 425 ft    Adv Warning = 500 ft

5 to 6 pole sections

12 skip lines

165 paces